

*forta*  
**C|U|B|E**

IT'S A PROMISE

*Your Space will*

**Work Smarter**

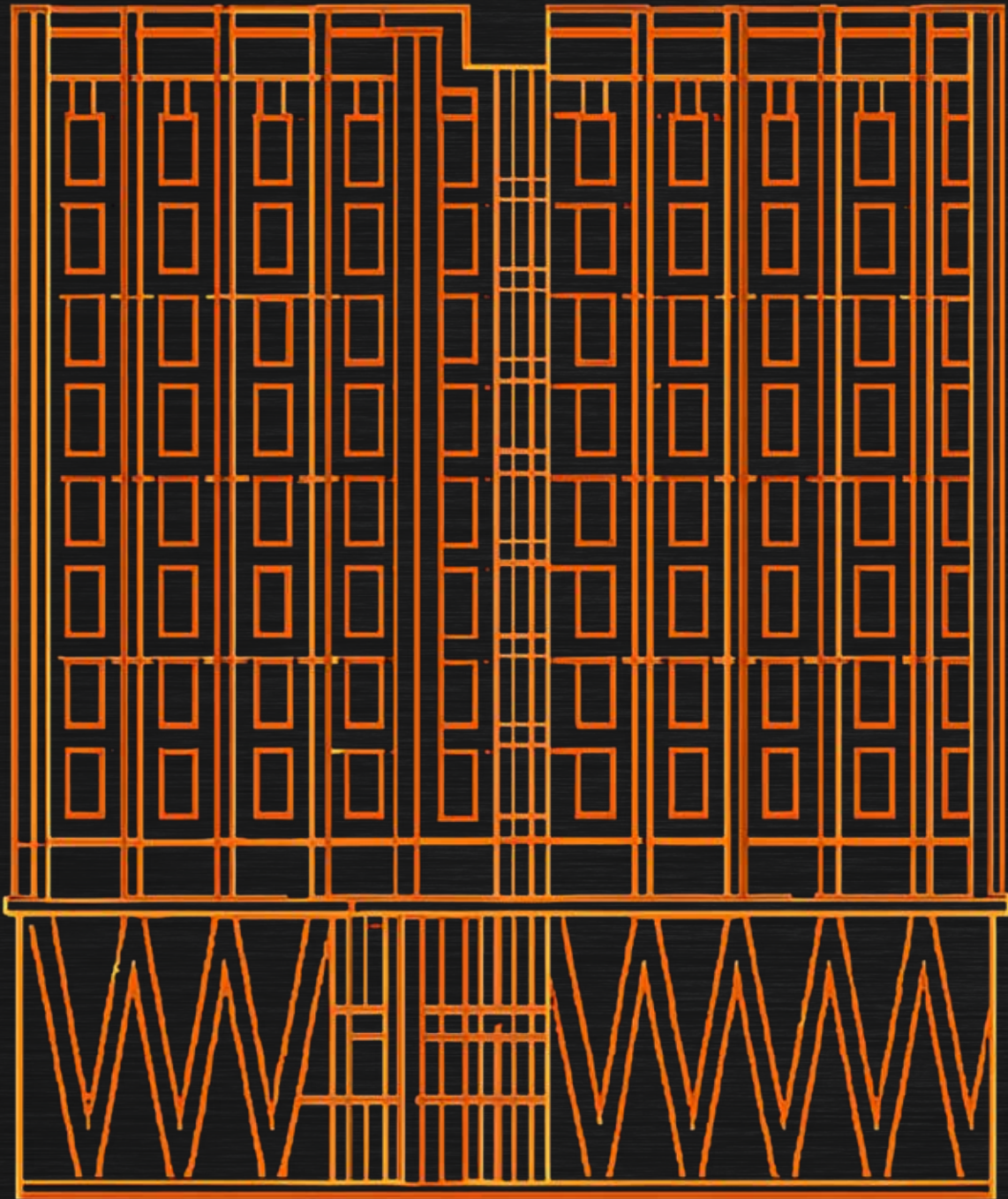
**Look Better**

**&**

**Endure Longer**

# Welcome to **Forta**Cube

*Elevating Commercial Spaces Through  
Intelligent Design and Lasting Strength*



At **FortaCube**, we don't just build products — we shape environments that breathe functionality and express elegance. Every toilet cubicle, shower cabin, locker, and bench is a brushstroke on a canvas of spatial experience, where **performance meets human comfort and visual clarity**.

Guided by a fusion of **craftsmanship, durability, and architectural insight**, we treat each project as a unique opportunity to create interiors that resonate deeply with those who use them. Our team of **design experts** and **manufacturing specialists** collaborates seamlessly to deliver fit-out solutions that embody **structure, strength, and sophistication**.

**We believe in precision — in material choices that speak volumes:**

The **waterproof resilience of Phenolic**

The **brilliance of polymer based sheets**

The **refined luxury of tempered Glass**

We choose finishes not just for their beauty, but for their ability to tell a story: Of **trust of taste**, Of **timeless performance**. As pioneers in **high-functioning commercial interiors**, we're redefining how cubicles, lockers, cladding, and furniture connect — visually, practically, and experientially. We pair **modernity with meaning, engineering with emotion**. **FortaCube** is more than a brand. It's a **promise** — that your space will **work smarter, look better, and endure longer**.

# About Us & Our Philosophy

*We deliver more than fixtures — we build environments with precision, purpose, and longevity, spanning hospitality, education, healthcare, fitness, retail, and corporate interiors.*

## Products

Toilet Cubicles  
Shower Cabins  
Lockers & Changing Rooms  
Wall Cladding  
Kitchen Cabinets  
Vanity Units & Wardrobes  
QSR Furniture  
HPL Doors

## Our Philosophy

Design must serve purpose  
Performance must exceed  
expectation  
User experience must guide  
innovation

# Materials

We choose materials for their ability to tell your project's story — whether subtle elegance or bold definition. We select only the finest materials from leading manufacturers and have independently developed custom hardware accessories.

- **Wood grains for warmth**
- **Satin textures for clarity and calm**
- **Marble prints for luxury refinement**
- **Polymer Sheets for light-driven privacy**

Every finish is a deliberate choice that amplifies both brand and experience. We believe in precision — in material choices that speak volumes and tell a story of trust, taste, and timeless performance.

# Excellence

<b>Material</b>	<b>Thickness</b>	<b>Features</b>
Phenolic	12–13mm	Moisture-resistant, impact-proof
Compact Laminate	10–18mm	Ultra-dense, scratch-resistant
HPL on Chipboard Core	0.7–1mm + 18–20mm	Abrasion, fire, and water-resistant
Polymer based	6–10mm	Translucent, lightweight, flexible
Tempered Glass	8–10mm	Easy to clean, visually expansive



**Adjustable Leg**  
Stainless Steel



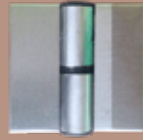
**Door Lock**  
Stainless Steel



**Coat Hook**  
Stainless Steel



**Shoe Box**  
Aluminium



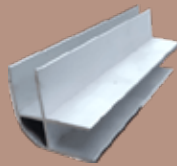
**Gravity Hinge**  
Stainless Steel



**Door Knob**  
Stainless Steel



**Head Rail**  
Aluminium



**Corner**  
Aluminium



**U Channel**  
Aluminium

# Engineering & Hardware Systems

## Product Engineering

Standard cubicle height: 2050mm

Leg clearance: 100mm

Modular configurations, seamless installation

**Waterproof • Fireproof • Mildew-proof**

## Intelligent Hardware

**Hinges:** SS/Nylon, 200K+ operations

**Adjustable Legs:** 100mm elevation, leveling tolerance

**Coat Hooks:** Non-slip, heavy-duty

**Emergency Bolts:** Concealed with safety release

**Headrails:** 50×32×1.8mm anodized aluminum

# Toilet Cubicle Systems Overview

**FortaCube** cubicles are engineered for strength, hygiene, and sleek aesthetics across commercial sectors. They are designed for uncompromising durability, enhanced privacy, and effortless maintenance

- **Offices**
- **Hospitals**
- **Retail Malls**
- **Educational Institutions**
- **Hospitality (Hotels & Resorts)**
- **Industrial Facilities**

## Key Design Features

**Flush-fronted appearance:** Creates a seamless, modern look with a distinctive 'floating' appearance.

**Standard & full privacy options:** Solutions are available to accommodate both standard and increased privacy requirements, including full-height options.

**Hardware finishes:** Satin anodized aluminum, stainless steel, with optional black, brass, or bronze effect coatings for ultimate design flexibility.

**Color Range:** 34 HPL/Phenolic options providing extensive design flexibility.



# Toilet Cubicle Mounting Style Headrail Braced

## **Style**

**Headrail  
Braced**

## **Benefits**

A cost-effective yet exceptionally sturdy option, featuring overhead bracing for maximum stability. This design is rooted in practical application, ensuring reliability in continuously busy restrooms where consistent performance is paramount.

## **Best For**

Public facilities,  
Transit hubs,  
Schools



# Toilet Cubicle Mounting Style Pedestal Mounted

## **Style**

**Pedestal Mounted**

## **Benefits**

A sleek, modern aesthetic achieved through panels supported by adjustable pedestals. This design offers a clean, elevated look, simplifying maintenance and is perfect for contemporary spaces seeking a minimalist yet functional design.

## **Best For**

Corporate Offices,  
Shopping centers,  
Hotels



# Toilet Cubicle Mounting Style Ceiling Hung

## **Style** Ceiling Hung

## **Benefits**

This style creates an open, minimalist appearance with panels suspended from the ceiling. Beyond its striking visual appeal, this design significantly simplifies floor cleaning and ensures hygiene, making it a visually expansive choice for modern facilities.

## **Best For**

Luxury washrooms, high-design spaces



# Toilet Cubicle Mounting Style Floor Mounted

## **Style**

**Floor  
Mounted**

## **Benefits**

Robust and inherently secure, with panels anchored directly to the floor. This provides absolute stability under heavy traffic, ideal for environments where enduring strength and security are non-negotiable.

## **Best For**

Industrial environments, security-sensitive areas



# Toilet Cubicle Mounting Style Floor to Ceiling

## **Style**

**Floor to  
Ceiling**

## **Benefits**

Full-height partitions extending from floor to ceiling, offering the ultimate in privacy. This design is chosen for its enhanced acoustic isolation and complete visual exclusivity, delivering a luxury experience.

## **Best For**

Executive washrooms, resorts, spas



# Urinal Dividers

FortaCube urinal dividers are space-efficient panels specifically designed to optimize hygiene and user comfort. They are crafted to maximize facility capacity while maintaining individual privacy.

- **Lightweight**
- **Easy maintenance**
- **Privacy-focused design**

**Best for:** Schools, stadiums, public restrooms, and other facilities requiring efficient and hygienic solutions.



# Shower Cabins

FortaCube shower cabins are meticulously designed with user comfort and long-term durability in mind, ideal for gyms, spas, and residential complexes. They are inherently resistant to moisture and wear, offering fully customizable designs to seamlessly integrate with your space's aesthetic.

**Height:** 2150mm

**Clearance:** 100mm (ground clearance)

**Materials:** Phenolic / Compact Laminate / Glass

**Hardware:** SS or nylon

**Finishes:** Satin, frosted, marble

**Applications:** Fitness centers, health clubs, residential complexes, spas, and hospitality bathrooms.



# Changing Room Systems

Our changing room solutions ingeniously combine lockers, benches, and privacy panels to create **functional, comfortable, and aesthetically cohesive spaces.**

**Materials:** Panels are available in 12-13mm **Phenolic** or **Compact Laminate**, or 18-20mm **HPL** on a chipboard core.

**Finish Range:** Choose from authentic wood grains, sleek satins, and tactile textured surfaces.

**Fittings:** Feature robust stainless steel or nylon fittings, including secure bolt-through hinges and adjustable legs (150mm clearance) for optimal stability and ease of maintenance.

**Benches:** Meticulously crafted from **Phenolic, Plywood, or HPL**, offering sturdy, stylish, and comfortable seating solutions. Fully customizable lengths, up to 2000mm, to perfectly fit any spatial requirement.



# Wall Cladding Systems

Transform any interior with our durable and aesthetically versatile wall cladding options. Our high-performance panels are designed to be:

**Scratch-proof**

**Water-resistant**

**Impact resilient**

Ensuring seamless integration with your design.



# Wall Cladding: Material & Finish Options

Material	Thickness	Benefits	Finishes
HPL	0.7–1mm on 18mm Various boards	Offers robust resistance to scratches, moisture, and wear. Provides an excellent balance of durability and a vast array of design possibilities, allowing for precise reflection of a designer's vision.	Diverse range of marble, wood grain, satin, textured finishes
Compact Laminate	6–10mm	Known for its exceptional durability and ease of cleaning, Compact Laminate cladding is a resilient choice for areas demanding high hygiene standards and resistance to impact.	Solid colors, intricate patterns
Polymer based	4–6mm	Lightweight and highly impact-resistant, Polymer sheets offers a unique aesthetic with translucent options that can enhance natural light within a space, providing a modern and robust surface.	Diverse range of marble, wood grain, satin, textured finishes



# QSR Tables & Counters

Our **HPL tables and counters** are specifically built to withstand the rigorous, fast-paced demands of quick-service restaurants (QSRs). They are inherently tough, remarkably easy to clean, and available in custom sizes and finishes to perfectly align with your brand's aesthetic.

**Core:** 0.6–1.2mm HPL on an 18–20mm various boards

**Edge trims:** Stainless steel or aluminum

**Finishes:** Vibrant solids, wood patterns, marble styles

**Durability:** Designed for fast turnover environments, resistant to spills, cleaning chemicals, and heavy use.



# Kitchen Cabinets

Our kitchen cabinets, made from **HPL or Plywood**, seamlessly combine everyday practicality with contemporary style. Built to withstand the rigors of daily commercial use or residential demands, they are ideal for any project.

**Construction:** 0.6–1.2mm HPL on an 18mm various boards core / 18–20mm Plywood

**Hardware:** Durable stainless steel hinges and handles, ensuring longevity and smooth operation in busy environments.

**Finishes:** Available in a wide array of wood grains, solid tones, or marble textures.



# Wardrobes & Vanity Units

Create highly organized and aesthetically pleasing storage solutions with our wardrobes and vanities. Available in **HPL or Plywood**, these units are engineered for durability and seamless integration into both commercial and residential settings.

**Materials:** HPL or Plywood

**Hardware:** Stainless steel or nylon

**Finishes:** Wood grain, satin, marble textures

**Ideal for:** Hotel suites, changing areas, and residential zones



# HPL Door Systems

FortaCube HPL doors blend resilience with sleek design to meet the demands of commercial environments.

**Specification:** 0.6–1.2mm HPL layered over 16–25mm board

**Standard Height:** 2000mm

**Hardware:** Premium stainless steel or nylon hinges and locks

**Finishes:** Wood grain, marble, satin, textured options

**Applications:** Office interiors, healthcare, hospitality, and retail environments.

These doors are engineered for durability, style continuity, and consistent visual flow across installations.



*forta*  
C|U|B|E

# Why FortaCube Excellence Built In

Choose FortaCube for performance you can trust:

- 5-Year Product Warranty
- Hardware Cycle Life: 200,000+ uses
- Certified Moisture & Mildew Resistance
- Fire-Resistant Surface Materials
- Integrated Design Docking Across Fixtures

Every cubicle, locker, or table is part of a larger design system — built to last and crafted for impact. Our unwavering commitment to quality and trust is reflected in every product we deliver.



# Design Integrity & User-Centered Innovation

## Built for Real-World Experience

We consider the physical, emotional, and spatial needs of your end-users — not just specs. Every FortaCube product is developed with an intense focus on the end user's experience, setting it as our ultimate benchmark of quality.

- Humanized switch mechanisms
- Ergonomic heights and clearances
- Seamless finish continuity across surfaces
- Integrated safety features for ease of access

Our engineering is people-focused — ensuring long-term usability without compromising design. We recognize that diverse projects cater to different demographics, situations, and environments, making humanization of design central to everything we do.



# Cubicle Dimensions

# Standard Cubicles

Our Standard Height Cubicles are designed for robust performance and a sleek aesthetic, with specific dimensions tailored to each material type

<b>Material</b>	<b>Overall Height</b>	<b>Maximum Depth</b>	<b>Floor Clearance</b>	<b>Minimum Ceiling Clearance</b>
<b>HPL</b>	2070mm	2084mm	50mm	20mm
<b>Phenolic</b>	2065mm	1921mm	50mm	20mm
<b>Laminated</b>	2070mm	2084mm	50mm	20mm
<b>High Gloss</b>	2070mm	2084mm	50mm	20mm

# Full Height

Our Full Height Cubicles offer enhanced privacy and a commanding aesthetic, with dimensions optimized for maximum coverage.

<b>Material</b>	<b>Overall Height</b>	<b>Maximum Depth</b>	<b>Floor Clearance</b>	<b>Minimum Ceiling Clearance</b>
<b>HPL</b>	2840mm	2084mm	50mm	20mm
<b>Phenolic</b>	2823mm	1921mm	50mm	20mm
<b>Laminated</b>	2840mm	2084mm	50mm	20mm
<b>High Gloss</b>	2840mm	2084mm	50mm	20mm

# Privacy Specs

For projects demanding the highest level of seclusion, our Privacy Cubicles offer specialized dimensions to ensure complete enclosure.

<b>Material</b>	<b>Overall Height</b>	<b>Max Height</b>	<b>Max Depth</b>
<b>HPL</b>	2040mm	2810mm	2035mm
<b>Phenolic</b>	2235mm	2793mm	1921mm
<b>Laminated</b>	2040mm	2810mm	2035mm
<b>High Gloss</b>	2040mm	2810mm	2035mm

## Shower Cabins: Detailed Specifications

### **Materials:**

**Phenolic panels:** 12-13mm thick

**Compact Laminate panels:** 12-13mm thick

**Glass options:** 8-10mm tempered

### **Hardware:**

Robust stainless steel or nylon hinges and handles

Ensures exceptional corrosion resistance and a secure, lasting performance in high-humidity environments.

### **Finishes:**

Elegant satin - Sophisticated frosted - Classic marble

# Gym Lockers & Changing Rooms

Type	Material	Finish Range	Benefits
<b>Phenolic Lockers</b>	12–13mm Phenolic	Wood grain / solid colors	<b>Water-resistant</b> and exceptionally tough, perfect for humid environments. Superior resistance to moisture and impact ensures long-term integrity and hygiene.
<b>Plastic Laminate Lockers</b>	Varies based on core	Custom visuals	An <b>affordable yet stylish</b> solution, offering a vast array of aesthetic possibilities. Provides a balance of durability and visual appeal
<b>Plywood Lockers</b>	18–20mm Plywood	Natural wood / stained / laminate	Featuring a warm, natural look coupled with solid construction, offers <b>robust durability and a timeless aesthetic</b> . Designed for longevity and resilience.

# Brand Manifesto & Legacy

We believe space is more than a function — it's an experience. FortaCube empowers designers, developers, and end-users with tools to build environments that look good, feel better, and last longer. Guided by a fusion of craftsmanship, durability, and architectural insight, we treat each project as a unique opportunity to create interiors that resonate deeply with those who use them.

**We don't just manufacture products. We create environments that work smarter and live beautifully.**

## Contact & Collaboration

**Let's Build Your Next Space Together. Have a project in mind? Let's collaborate. Our expert team is ready to discuss your specific needs and create spaces that inspire and endure**



*forta*  
**C|U|B|E**

**IT'S A PROMISE**

*fortacube.com*